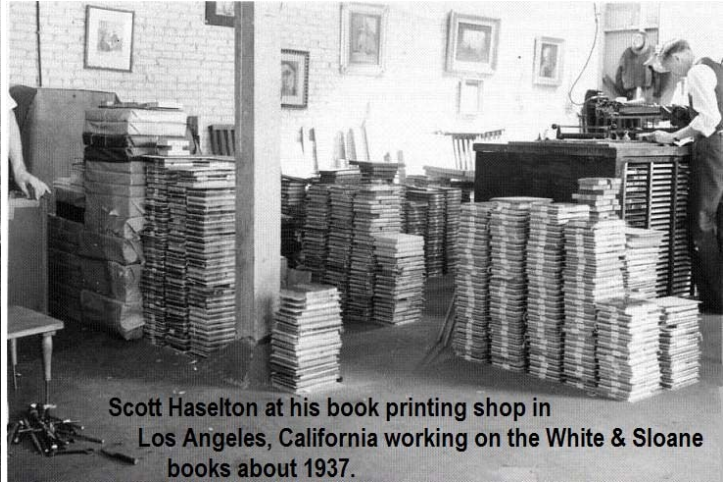
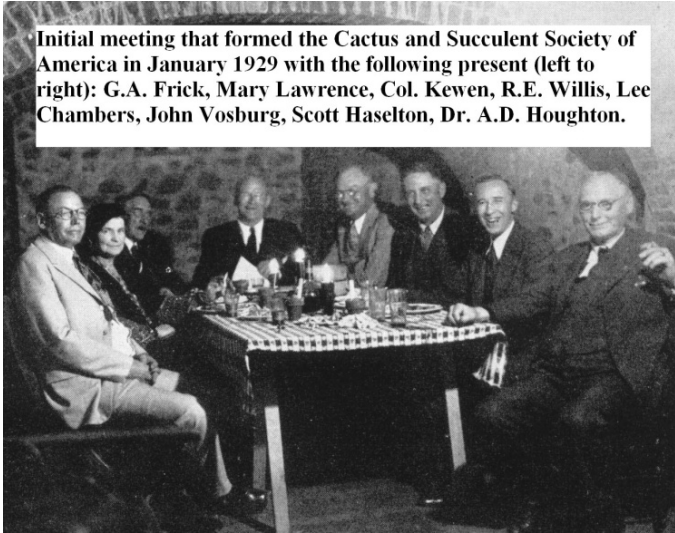


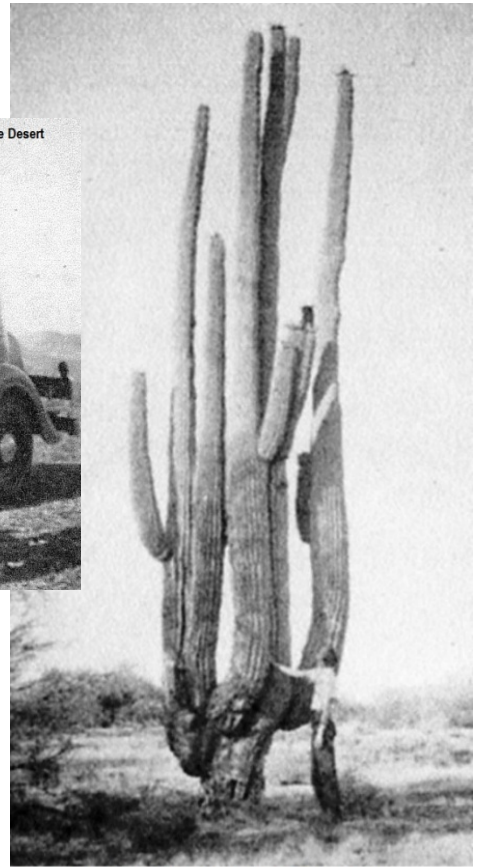
SCOTT HASELTON IMAGES



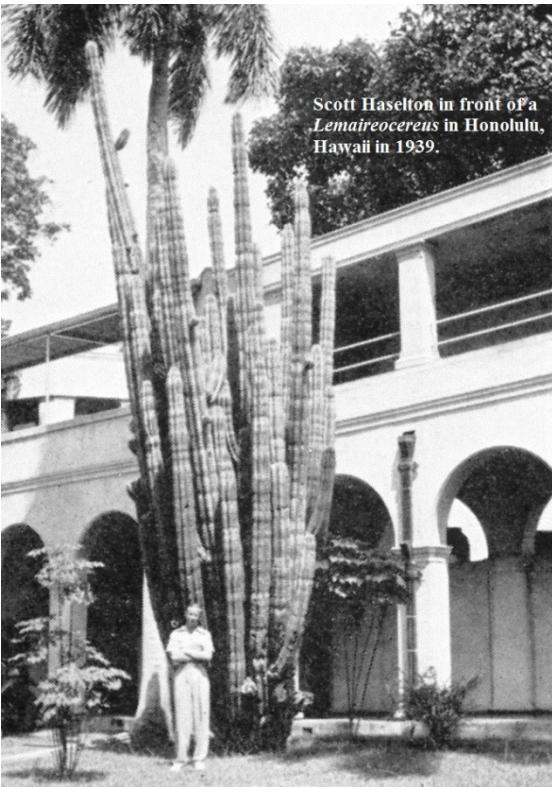


Scott Edson Haselton (1895-1991) from the 1985 booklet *Scott E. Haselton and his Abbey Garden Press* by DW Davies.

Howard O Bullard, Scott Haselton & Gilbert Tegelberg Sr at Ord mountain area of Mojave Desert in southern California in 1939.



Scott Haselton w *Pachycereus pringlei* in Baja California in 1935.

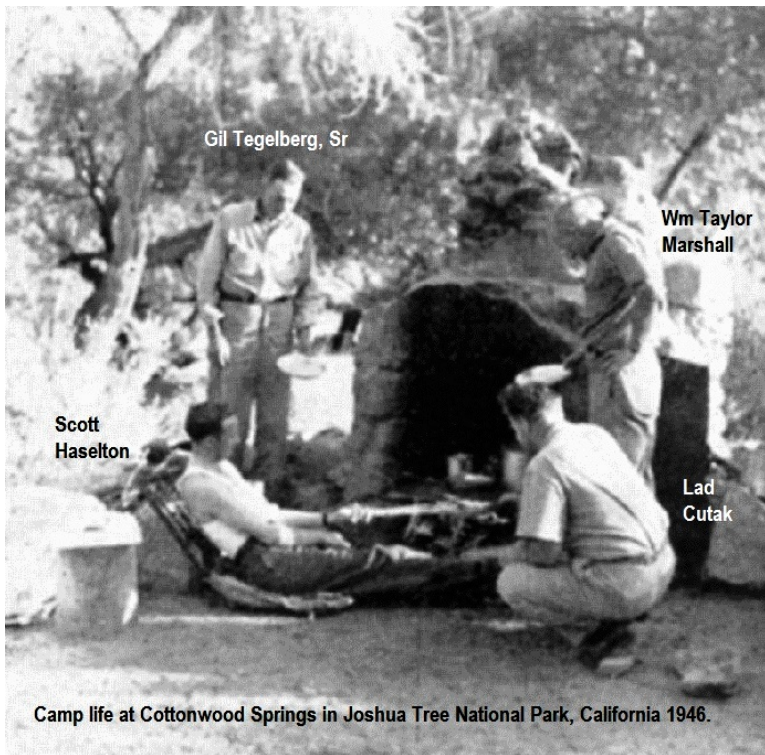


Scott Haselton in front of a *Lemaireocereus* in Honolulu, Hawaii in 1939.



Mrs. Frank Seinsheimer Charles R Cole W Taylor Marshall Scott Haselton Ladislaus Cutak Mrs. M H Starkweather

Ervin Strong Mace Taylor
First CSSA Convention in St. Louis 1941.



Gil Tegelberg, Sr

Wm Taylor
Marshall

Scott
Haselton

Lad
Cutak

Camp life at Cottonwood Springs in Joshua Tree National Park, California 1946.



Scott Haselton holding the rib skeleton of a dead Saguaro next to a live Saguaro c1948.



Scott Haselton and Reid Moran

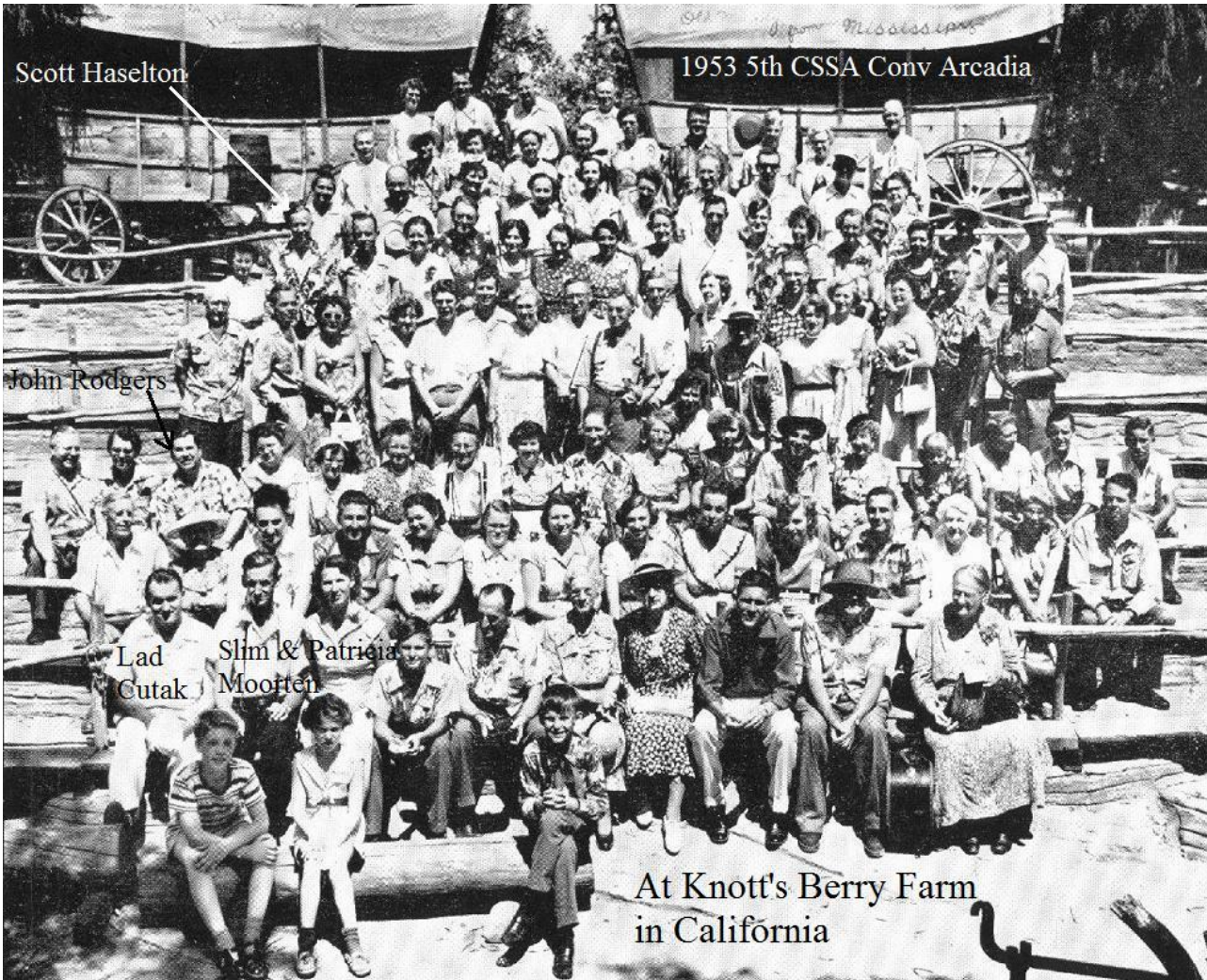


Scott Haselton inspecting the half-mile rows of seedlings of *Stapelia hirsuta* in California.

1949 3rd CSSA Convention at Phoenix, Arizona July 2-5.



1953 5th CSSA Conv Arcadia



Louis E Blanchard, Scott Haselton & Wm T Marshall in 1952
from Ted Taylor slide photo.



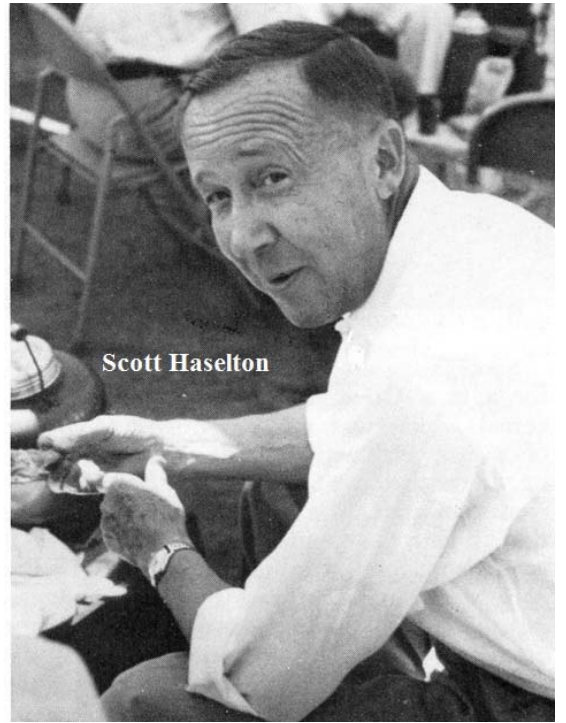
Attendees at a banquet for Helioa Bravo-Hollis at Pomona College about 1956. 1 Robert T Craig, 2 Scott Haselton, 3 Slim Moorten, 4 Reid Moran, 5 ?, 6 ?, 7 Clark Moorten (son), 8 Ethel Rush, 9 Homer Rush, 10 Lyman Benson, 11 Mrs. Benson, 12 Ina Craig, 13 Howard Gates, 14 Helia Bravo-Hollis, 15 Pat Moorten. Photo by George Lindsay.

Charles Wills

Scott & Dorothy
Haselton



Hawaii C&SS
Late 1960s

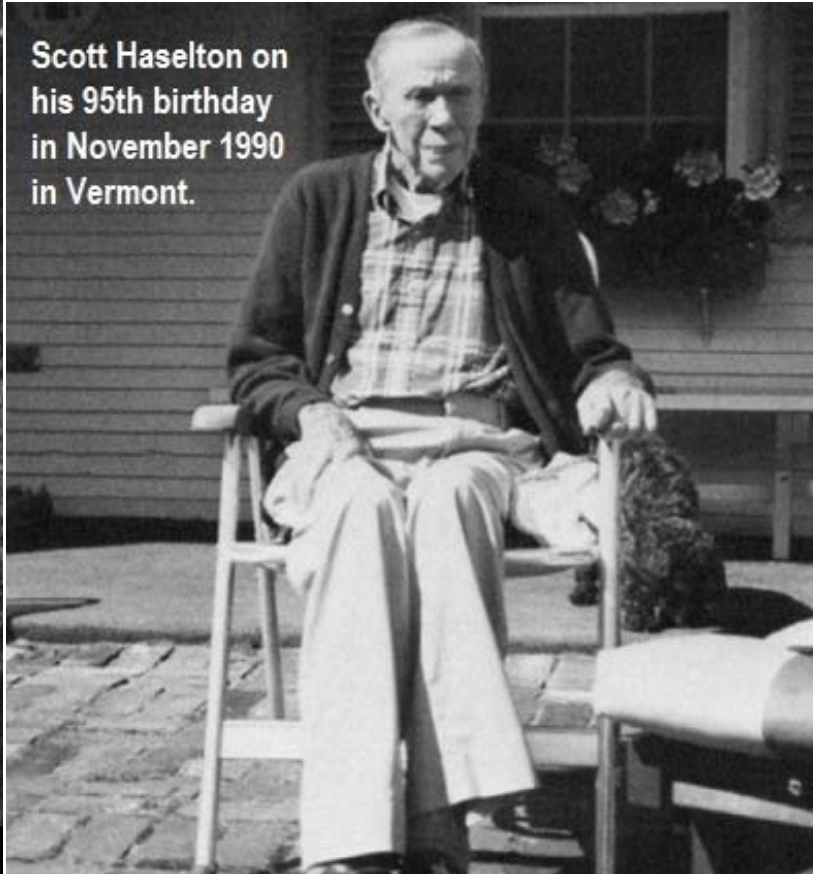


Scott Haselton





Scott and Dorothy Haselton



**Scott Haselton on
his 95th birthday
in November 1990
in Vermont.**

Copyrighted material on this site is used in accordance with 'Fair Use', for the purpose of providing dedicated succulent personalities, and will be removed at the request of copyright owner(s).